



**By Air**

Madrid Barajas Airport is approximately 20 minutes drive to the hotel (11 kms). The Wellington is happy to arrange a luxury private car pick up and transfer to the Hotel.

**By Train**

The nearest underground station is Retiro which is served by the red line (number 2)  
 Velázquez station is also very near the hotel, being served by the brown line (number 4)

**Location**

Located in Salamanca district in the heart of the business area, just a minutes' walk from the shops and boutiques of Serrano St. or Ortega y Gasset St., as well as the most famous and renowned ART TRIANGLE

**Rooms and Suites**

• 255 bedrooms including 25 suites, among them the Presidential Suite and Ramón Gomez de la Serna Suite, with wonderful views across the Madrid skyline.

Opened in 1952 keeps the traditional style and personal attention, featuring a wide choice of services in all the recently refurbished facilities, updated to the actual needs.

**Restaurants and Bars**

- The Goizeko Wellington à la carte restaurant shows the best sample of the traditional and updated Basque cooking.
- Kabuki Wellington, a Japanese restaurant using ingredients of the Mediterranean cuisine. Awarded with Michelin star 2010.
- The English Bar offers a very special ambiance to enjoy a cigar among a wide range while you have a drink, cocktail or tapa.
- La Terraza del Wellington
- La Llave de Oro coffee shop offers light meals and a well cared daily menu. With openair terrace in Velazquez st.

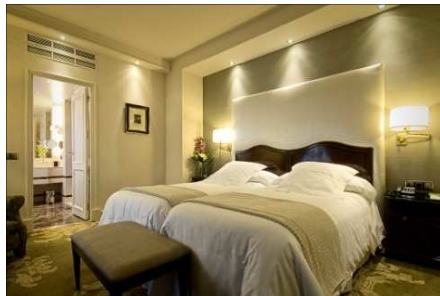
**Conferences, Meetings and Private Dining Rooms**

A choice of three banqueting rooms on the ground floor and eight private rooms, recently renovated, on the 1st floor. All are filled with natural light and provide a stunning venue for all kind of occasions including cocktail parties, weddings, private dinners and meetings.

They are all fitted with audio-visual and communications equipment and with capacity up to 230 guests.

**Other facilities**

- outdoor summer swimming pool
- outdoor Jacuzzi
- hairdresser's
- business center
- parking
- Wellness Centre managed by Caroli Health Club:
  - ✓ SPA
  - ✓GYM
  - ✓SAUNA
  - ✓PERSONAL TRAINING



Hotel Wellington – Velázquez St., 8 – 28001 – Madrid – Tel: +34 915 754 400;  
 Fax: +34 915 764 164; [www.hotel-wellington.com](http://www.hotel-wellington.com) – [wellington@hotel-wellington.com](mailto:wellington@hotel-wellington.com)  
 Reservations: Tel: +34 914 231 407; Fax: +34 915 752 063 – [reservas@hotel-wellington.com](mailto:reservas@hotel-wellington.com)